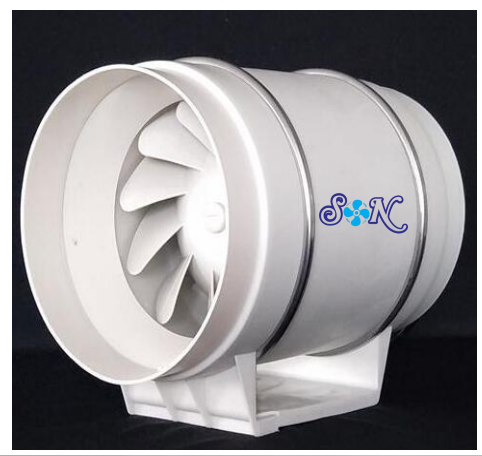


CHATWANE



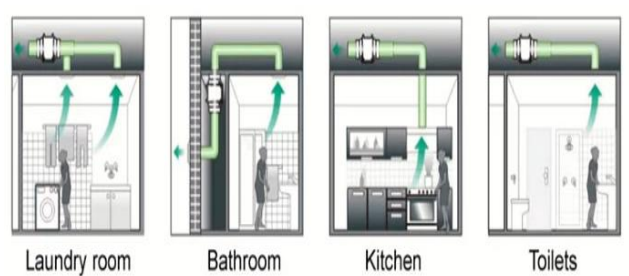
SDF Series

Silent Duct Fans



Product Description

- ❖ Fan body is made of environment protection material, double insulation.
- ❖ The shell is made of polypropylene plastic, one-time disposable molded, with high anti-acid function.
- ❖ Electric motor with imported ball bearing, long working life.
- ❖ Using hydromechanics impeller to reach the optimal air and pressure.
- ❖ Special design of metal clips to easy dismounting and maintenance.
- ❖ Can be designed with a delay function, temperature sensors and humidity sensors, more of user-friendly features design.
- ❖ Great for venting air into greenhouses and grow rooms. Will provide your plants with a consistent strong fresh airflow.
- ❖ It can move air through long stretches of ducting, grow light reflectors or carbon filters.
- ❖ SDF can be applicable in restaurants, kitchen, washroom, offices and other places for exhaust.
- ❖ SDF also have the power to suck the smoke and hot air to vent out.



Technical parameters

Model	Diameter	Voltage	Power	Speed	Airflow	Weight
	mm / Inches	V	W	RPM	CFM	kg
SDF-100	100(4")	220	35	2600	130	2
SDF-150	150(6")	220	75	2600	320	3.5
SDF-200	200(8")	220	130	2600	530	5
SDF-250	250 (10")	220	225	2450	850	8
SDF-300	315 (12")	220	320	2500	1700	12



Tel. 065-359-6297 **Mail: ctffans@gmail.com**